

↑ 75%
of increment in electricity bills compared to last year

EARN
51 LKR/KWh*

AVERAGE PAYBACK ON SOLAR IN SRI LANKA
5 Yrs

PERSONAL BENEFITS OF INSTALLING SOLAR



Reduce or eliminate your electricity bill



After the payback period you're earning money on your roof!



It's never been more affordable!



Turning your roof into an asset, increases the value of your own home



Solution for power interruptions



JA SOLAR



DINAPALA
GROUP

**Dedicated to Creating Clean,
Affordable Energy Solutions for
Everyone.**

**Complete Commercial &
Residential Smart Energy
Solutions.**

Customer name:

Customer Address :

System Capacity : 5KW Three Phase

TEL- 070-722-3578



WhatsApp

:070-735-9330



DINAPALA
GROUP

Dear Customer,

Your business is unique, and each solar energy project is unique. DINAPALA SOLAR, we pride ourselves on creating custom solar energy solutions that fit the specific needs of your home, office, or commercial building.

The cost of energy from national grids keeps going up, and the importance of maintaining a healthy environment grows every day. Installing a solar energy system is a cost-effective, sustainable, and simple way to reduce your environmental footprint and your energy budget. We know you care about the natural environment as much as we do. Solar energy is non-polluting and renewable and the source is Free!

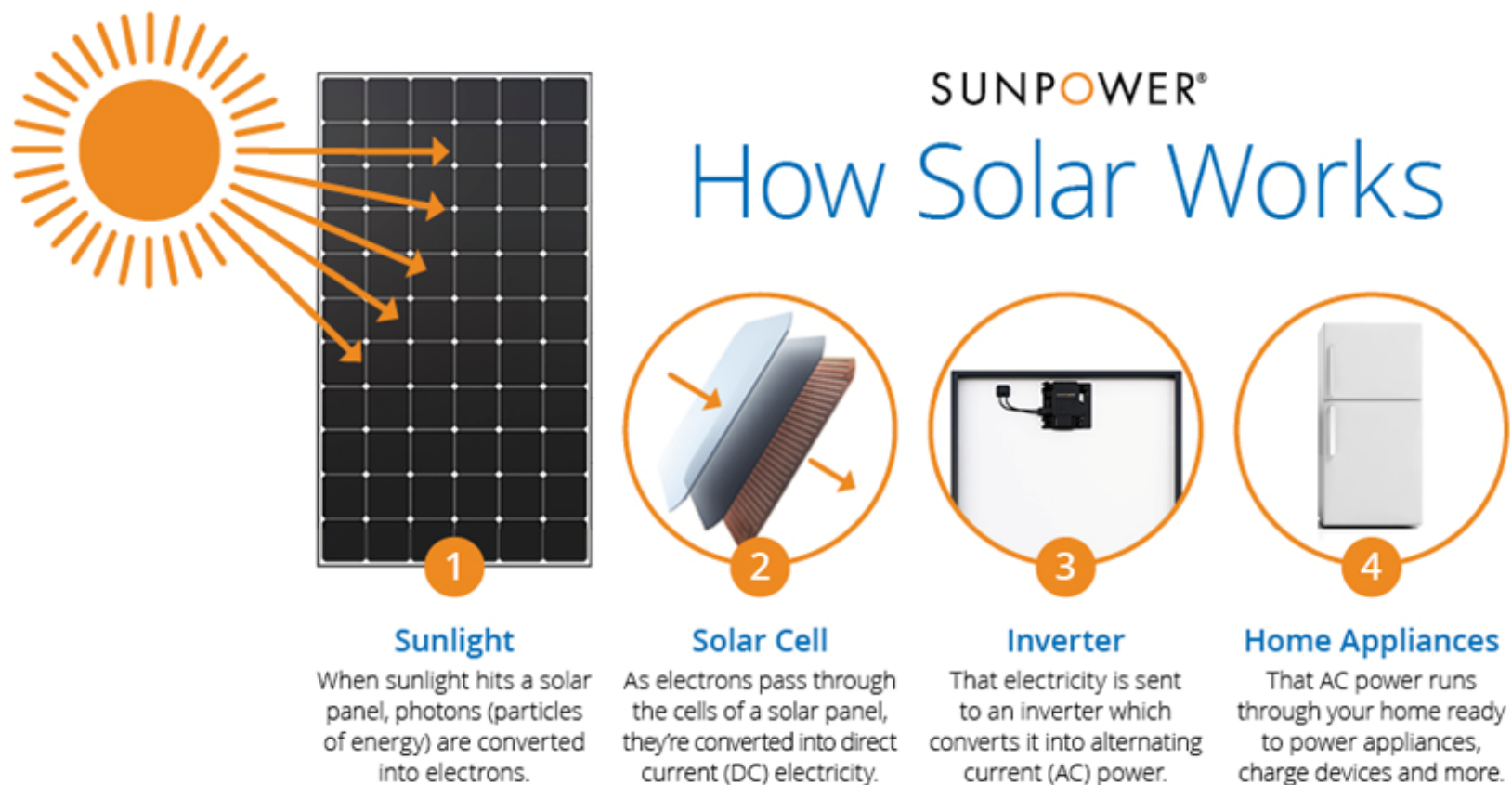
DINAPALA SOLAR is authorized to install the solar energy solutions in Sri Lanka by Sustainable Energy Authority Sri Lanka, Ceylon Electricity Board (CEB) and Lanka Electricity Company (LECO). This proposal contains everything you will need to select a solar energy plan that's right for your business, including facts and figures supporting the expected outcome a solar energy system will have on your overall costs, and projecting when your new system will "pay for itself" in energy savings.

We are confident that our qualifications and experience in the solar energy field will meet your needs, and we look forward to working with you to improve your energy consumption efficiently.

**Sincerely,
Team**



HOW SOLAR PV WORKS



When sunlight shines on the solar panels, it generates DC (Direct Current) power. Inverters change the DC into AC (Alternating Current) power. Solar panels will provide power to your home first.

Utility meter measures whether your home is consuming electricity, or producing more than you need. If your panels are producing more energy than your home requires, the excess energy will be sent to the grid and you may get credit or get paid from your local utility company.

The excess energy you sent to the grid can help offset some of the energy your home consumes during night time hours of no energy production from your solar panels, or during periods when your panels are not producing as much as you need.

OUR KEY REFERENCES



PROJECT 200KW

multibillion rupee turnover company that is the nation's leading packaging provider and manufacturer. Focusing primarily in the fields of corrugated and flexible packaging we have set the industry standard for excellence in service and quality for the last 25 years.



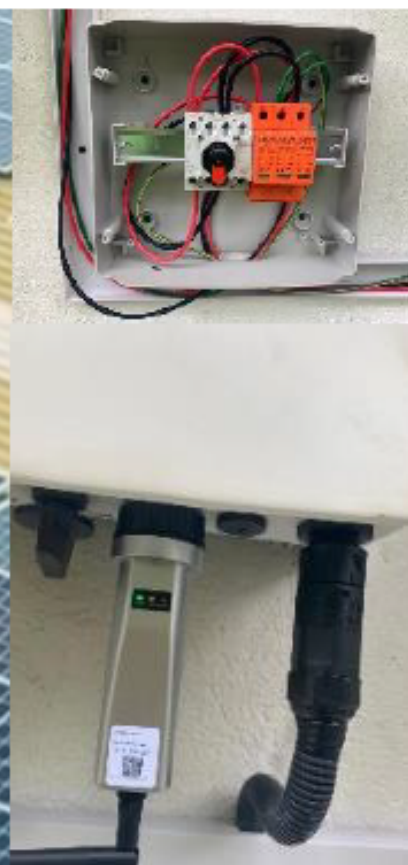

NORLANKA
RESPONSIBLE SOURCING • DESIGN • INNOVATION

PROJECT 630KW



PROJECT 280KW

We are a well-established cinnamon manufacturing, processing, and exporting organization in Sri Lanka and the company is located in Karandeniya electoral area of Galle



PROJECT 28 Sites 650KW



Our bank from humble beginnings has become the pulse of every Sri Lankan by enhancing their living standard whilst supporting State endeavors and socio-economic development considering the aspirations of the nation.

ALL MATERIALS INCLUDED

ON Grid system and Accessories			
Item No.	Description	Qty	Picture
1.	Solis 5Kw ThreePhase Inverter	1	
2.	Solar Panel Brand: JA SOLAR 540 W	10	
3.	Solar Mounting Set Per PV Module	10	
4.	Single Phase Accesories All Inclusive	1	<ul style="list-style-type: none"> 1)SPD /DC/3P - 2pcs 2)Isolating Switch /DC/DIN - 1pcs 3) SPD /AC/2P - 1pcs 4)MCB /AC/2P/32Am - 1pcs 5)Isolating Switch /AC/2P/32Am/With Box -1 6)Distribution Box - 12Way - 2pcs 7)Junction Box /32Am/2P - 1pcs 8)PV Solar Cable - Black - 30m 9)PV Solar Cable - Red - 30m 10)MC4 Connector - Pair - 2pcs 11)Polychrome Conduit 25mm - 12pcs 12)AC Cable - Single Core-6mm/Blue - 20m 13)AC Cable - Single Core-6mm/Brown - 20m 14)Earth Cable-6mm - 20m 15)Earth Rod - 1pcs 16)Wiring Accessories 17) CEB Charges Included

Component	Manufacturer	Country of Manufacture
Solar Panel	JA solar Tier 1	China
Solar inverter	Solis	China
Aluminum	Alumex,Swisstek	Sri Lanka
AC SPD	Suntree	Romania / India
DC SPD	Suntree	Romania / India

No	DC / AC Cables	Bidder's Response	
		DC	AC
1	Make	Sierra	Sierra
2	Country of Origin	Sri Lanka	Sri Lanka
3	Standards	SLS 1542:2016	SLS
4	Application Range	Solar PV cables are subjected to the harshest conditions during the minimum expected lifetime of 30 years	Use in fixed installation in industrial areas, buildings and similar applications - overhead
5	Design	Tinned annealed copper wire	Conductor – class2 annealed copper wire
6	Product Feature	Cu/PVC/XLPE	Cu/PVC/PVC
7	Minimum Bending Radius	5 x Cable Dia	12 x Cable Dia
8	Nominal Voltage	1000 / 1500 V	600 / 1000V
9	Temperature Range	-40 ⁰ C ~ 120 ⁰ C	-40 ⁰ C ~ 120 ⁰ C
10	UV protected		N/A
11	MC4 connector	Yes	NA
Mounting Structure		Requirements	Bidder's Response
I	Railings	Aluminum	Yes
ii	Nuts & Bolts	SS 304	Yes
iii	Other fixing components	SS 304	Yes
iv	Cable Tie/Clips/Bracket	SS 304	Yes
v	Conduits	UPVC 1000	Yes
vi	Combiner Box	IP 65	Yes

Harvest the Sunshine

DEEP BLUE 3.0

Mono

550W MBB Half-cell Module
JAM72S30 525-550/MR Series

Introduction

Assembled with 11BB PERC cells, the half-cell configuration of the modules offers the advantages of higher power output, better temperature-dependent performance, reduced shading effect on the energy generation, lower risk of hot spot, as well as enhanced tolerance for mechanical loading.



Higher output power



Lower LCOE



Less shading and lower resistive loss

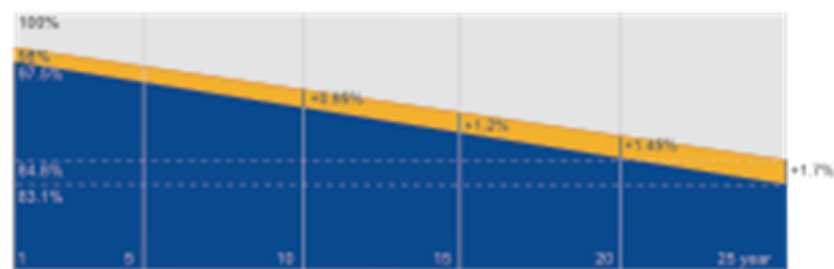


Better mechanical loading tolerance

Superior Warranty

- 12-year product warranty
- 25-year linear power output warranty

0.55% Annual Degradation
Over 25 years



■ New linear power warranty ■ Standard module linear power warranty

Comprehensive Certificates

- IEC 61215, IEC 61730, UL 61215, UL 61730
- ISO 9001: 2015 Quality management systems
- ISO 14001: 2015 Environmental management systems
- ISO 45001: 2018 Occupational health and safety management systems
- IEC TS 62941: 2016 Terrestrial photovoltaic (PV) modules – Guidelines for increased confidence in PV module design qualification and type approval



JASOLAR

www.jasolar.com

Specifications subject to technical changes and tests.
JA Solar reserves the right of final interpretation.



Solis-3P(5-20)K-4G

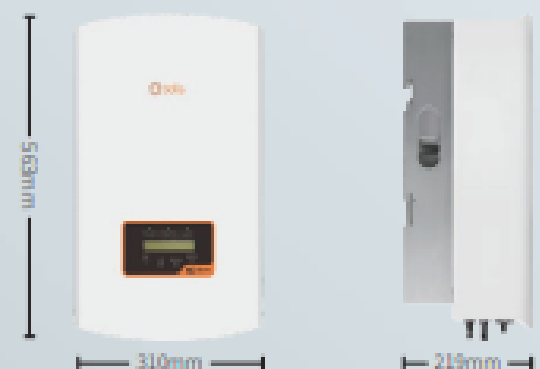
Solis Three Phase Inverters



360 degree

Features:

- ▶ Max. efficiency 98.7%
- ▶ Wide voltage range and low startup voltage
- ▶ 2 MPPT design with precise MPPT algorithm
- ▶ THDi<1.5%, low harmonic distortion against grid
- ▶ AFCI protection, proactively reduces fire risk
- ▶ Multiple protections levels
- ▶ Intergrated Export Power Manager (EPM)



Model:

- | | | |
|----------------|----------------|----------------|
| Solis-3P5K-4G | Solis-3P6K-4G | Solis-3P8K-4G |
| Solis-3P10K-4G | Solis-3P12K-4G | Solis-3P15K-4G |
| Solis-3P17K-4G | Solis-3P20K-4G | |



ශ්‍රී ලංකා පුනිත සබලතාවේ අධිකාරිය
இலங்கை நிலைபெறுதகு சக்தி அதிகாரம்
Sri Lanka Sustainable Energy Authority



විදුලිබල හා බලශක්ති අමාත්‍යාංශයේ පාරිච්ඡායිත අධිකාරිය
மிக்கதி மற்றும் வலுசக்தி அமைச்சின் கட்டுத்தரணை அதிகாரம்
A Statutory Authority of Ministry of Power and Energy

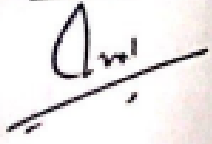
Our Reference: SLSEA/SBS/S00694
01st June 2023

Director,
K.A Dinapala & Co.,
No: 63, King's Street,
Kandy

Certification for Solar PV Rooftop Programme
Registration No: SLSEASBS00694PV24712023ABT1

This has reference to your application dated 10th April 2023 submitted for the registration in Solar PV Rooftop Programme. The evaluation committee appointed for registration of solar PV service providers has approved your company under "Soorya BalaSangramaya Programme" to import, supply and install of following items. Accordingly your company is hereby granted this registration for a period of six months with effect 01st June 2023.

Certificate Holder / Manufacturer	Country of Manufacture	Item Name	Model
Jinko Solar Co.,Ltd	China	PV Modules	Cheetah JKM400M-72H-V, JKM405M-72H-V, JKM410M-72H-V, JKM415M-72H-V, JKM420M-72H-V, Tiger and Tiger LM JKM460M-7RL3-V, JKM465M-7RL3-V, JKM470M-7RL3-V, JKM475M-7RL3-V, JKM480M-7RL3-V, JKM485M-7RL3, JKM460M-7RL3, JKM465M-7RL3, JKM470M-7RL3, JKM475M-7RL3, JKM480M-7RL3, JKM485M-7RL3, JKM460N-7RL3-V, JKM465N-7RL3-V, JKM470N-7RL3-V, JKM475N-7RL3-V, JKM480N-7RL3-V, JKM485N-7RL3-V, Tiger Pro JKM530M-72HL4-V, JKM535M-72HL4-V, JKM540M-72HL4-V, JKM545M-72HL4-V, JKM550M-72HL4-V, JKM530M-72HL4, JKM535M-72HL4, JKM540M-72HL4, JKM545M-72HL4, JKM550M-72HL4, Tiger Neo JKM465N-60HL4-V, JKM470N-60HL4-V, JKM475N-60HL4-V, JKM480N-60HL4-V
Shanghai JA Solar Technologies Co., Ltd / JA Solar International Limited	China	PV Modules	JAM72510-XXX/MR (XXX-390, 395, 400, 405, 410), JAM72530-525/MR, JAM72530-530/MR, JAM72520-440/MR, JAM72520-445/MR, JAM72520-450/MR, JAM72520-455/MR, JAM72520-460/MR, JAM72520-465/MR, JAM72510-390/PR, JAM72510-395/PR, JAM72510-400/PR, JAM72510-405/PR, JAM72510-410/PR, JAM72530-515/MR, JAM72530-520/MR, JAM72530-525/MR, JAM72530-530/MR, JAM72530-535/MR, JAM72530-540/MR, JAM72520-440 / MR, JAM72520-445/MR, JAM72520-450/MR, JAM72520-455/MR, JAM72520-460/MR, JAM72520-465/MR
REC Solar Pte Ltd	Singapore	PV Module	REC TP4 Series REC 365TP4, REC 370TP4, REC 375TP4 REC TP5 Series REC 390TP5, REC 395TP5, REC 400TP5, REC 405TP5, REC 410TP5, REC 415TP5 REC TP5 Black Series REC 390TP5 black, REC 395TP5 black, REC 400TP5 black, REC 405TP5 black, REC 410TP5 black
SMA Solar Technologies AG.,	China / Germany	PV Inverter	Sunny Boy - 3.0-1AV-41, 3.6-1AV-40, 3.6-1AV-41, 4.0-1AV-40, 4.0-1AV-41, 5.0-1AV-41, 6.0-1AV-41, STP3.0-3AV-40, STP4.0-3AV-40, STP5.0-3AV-40, STP6.0-3AV-40, STP8.0-3AV-40, STP10.0-3AV-40 Sunny Boy - 3.0-1AV-40, 5.0-1AV-40 Sunny Tripower - 5000TL-20, 7000TL-20, 8000TL-20, 9000TL-20, 12000TL-20, 6000TL-20, 10000TL-20, 15000TL-30, 17000TL-30, 20000TL-30, 25000TL-30, 50-40, 60-10, SHP 150-20 SB1.5-1 VL-40, SB2.0-1 VL-40, SB2.5-1 VL-40, SUNNY HIGHPOWER PEAK1, SHP 75-10 SB3.0-1AV-40, SB3.0-1AV-41, SB3.6-1AV-41, SB4.0-1AV-41, SB5.0-1AV-41, SB6.0-1AV-41, STP3.0-3AV-40, STP4.0-3AV-40, STP5.0-3AV-40, STP6.0-3AV-40, STP8.0-3AV-40, STP10.0-3AV-40, STP15000TL-30, STP17000TL-30, STP20000TL-30, STP25000TL-30, STP50-40, STP60-10, SHP150-20 Sunny High-power Peak3- SHP 100-20 STP 110-60
Fronius International GMBH	Austria	PV Inverter	Symo: 4.0-3M, 5.0-3M, 6.0-3-M, 7.0-3-M, 8.2-3-M, 10.0-3M, 12.5-3-M, 15.0-3-M, 17.5-3-M, 20.0-3-M, 27.0-3-M ECO- 25.0-3-S, 27.0-3-S Primo - 3.0-1, 3.5-1, 3.6-1, 4.0-1, 4.6-1, 5.0-1, 6.0-1 Tauro - 50-3-P Tauro Eco-50-3-P, 99-3-P, 100-3-P Fronius Tauro - 50 -3-D Fronius Tauro Eco -50-3-D, 100-3-D



H. A. Vimal Nadeera
Deputy Director General (Supply Side Management)
Sri Lanka Sustainable Energy Authority

අංක 72, ආනන්ද කුමාරස්වමි මාවත, කොළඹ 07, ශ්‍රී ලංකාව.
No. 72, Ananda Coomaraswamy Mawatha, Colombo 07, Sri Lanka.
දුරකථන අංකය / Office: +94(0)11 257 5030
ෆැක්සිමිල / Facsimile: +94(0)11 257 5030
විද්‍යුත් තැපෑල / E-mail: info@energy.gov.lk
වෙබ් අඩවිය / Web Site: www.energy.gov.lk

Solar Electricity Solutions

Select your option



1. Net Metering



Best choice when your bill is high and you have limited roof space.

- Zero your bill if you generate electricity as much as you consume.
- The energy you consume – Energy generated through solar = what you pay.
- If you produce more than you consume, it rolls forward and is deducted from your next bill.

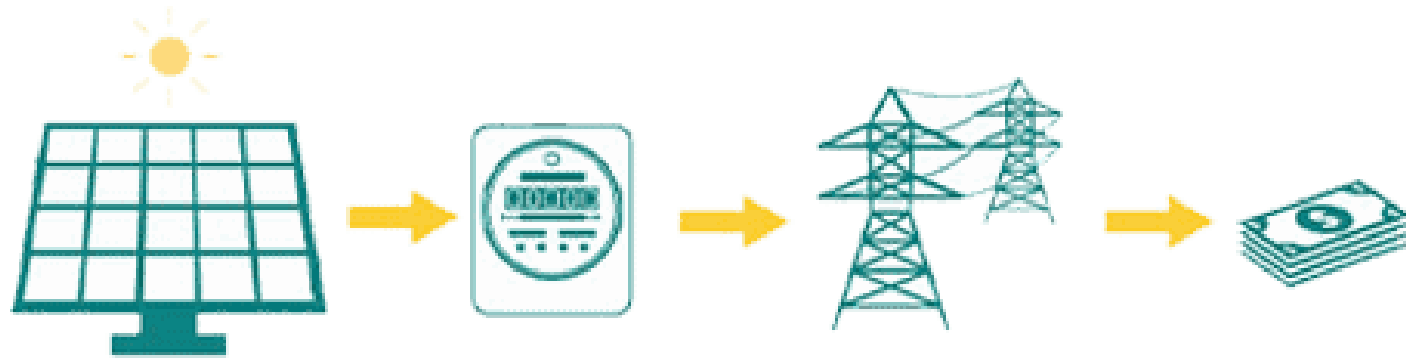
2. Net Accounting-recommended option for residential PV Systems



Best choice when your bill is low and you have more roof space to generate more electricity than you consume.

- Zero your bill if you generate as much as you consume.
- If you produce more electricity than you consume, you will be paid LKR 37/- per unit* for excess.

3.Net Plus- recommended option for Landlords who have Buildings given on Rent



Best choice when you are an industrial electricity consumer and when you cannot recover your electricity bill by solar, but still you have a large roof area such as a warehouse.

- **Earn LKR 37/- per unit* for the energy you generate.**
- **Continue to pay the electricity bill as it is**

Solar Monitoring Provided At No Additional Cost

Monitoring

Real time monitoring can be done



Online via connecting to wifi with the inverter and home router (sunny portal)



Logging by the relevant app using android device



Logging via windows devices by sunny explorer

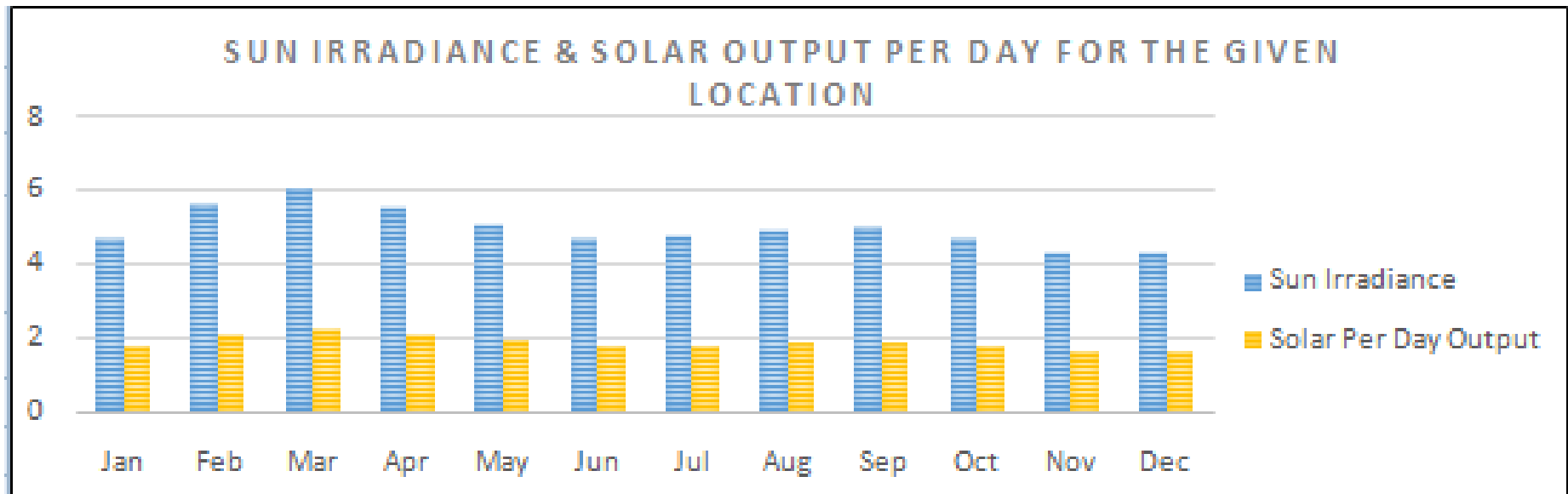


Financial Data Annalyis

Solar System Summary

Solar System Summary				Solar Site Details			
Client Name							
Tariff Type	Domestic			Required Roof Space	250 Sq.		
Location	kandy			Roof Facing Direction	South		
Solar System Size	5.40 kW			Performance % Due to direct	95%		
Inverter Size	5 kW			Roof Tilt Angle	5~15		
Inverter Load	108%			Performance % Due to Tilt	95%		
No of Solar Panels	10			Inverter Type	String		
Module Power	540 W			Performance % Due to Inver	85%		
Module Efficiency	20.90%						

Estimate Solar System Output Summary Data From - NASA USA DATABASE



Estimated Solar System Output Summary- Avg												
Months	Jan	Feb	Mar	Apr	May	Jun	Jul	Aug	Sep	Oct	Nov	Dec
Sun Irradiance per square meter	4.68	5.61	6.07	5.54	5.09	4.7	4.74	4.93	4.99	4.66	4.32	4.28
Per Panel Output Per Day	1.73	2.07	2.24	2.04	1.88	1.73	1.75	1.82	1.84	1.72	1.59	1.58
Per Month Output kWh	535	580	694	613	582	520	542	564	552	533	478	490
Annual Output - kWh	6,685											
Monthly Avg Output - kWh	557											
CO2 Saving Per Year - Kg	7,220											
1kWh = 1.08Kg CO2												

Project Monthly Cash Flow Saving Summary - Year 1

Monthly Cash Flow Summary		
Month	Monthly output	Monthly Savings from CEB BILL Rs.
Jan	535	36,932.75
Feb	580	40,253.90
Mar	694	48,858.46
Apr	613	42,777.98
May	582	40,450.40
Jun	520	35,803.56
Jul	542	37,447.53
Aug	564	39,077.66
Sep	552	38,211.39
Oct	533	36,761.16
Nov	478	32,648.46
Dec	490	33,500.89
Total	6,685	462,724.14

Total CEB BILL Payment Saving Year 1

Rs 462,724/=

Break Even Annalysis

Project Investment Summary

System cost		Rs.	1,449,000.00
Your Contribution		Rs.	1,449,000.00
Based on the analysis Your;			
Contribution will be		Rs.	1,449,000.00
Investment Break Even Point or Year			3.19
Saving over 10 years will be		Rs.	4,450,547.43
Saving over 15 years will be		Rs.	6,533,971.70
Saving over 20 years will be		Rs.	8,527,776.42

Your System Cost will be recovered in only **3 Years and 2 Months . After which you will Continue to receive the cost benefits for 20 Years + Over the life of the Solar PV System**

Project Yearly Savings Annalysis

System Output & Savings Over the years

Year	Solar Panel Efficiency	Yearly Output (kWh)	Annual Savings (Rs.)	Accumulated Savings (Rs.)
Y1	100.00%	6,685	462,724.14	462,724.14
Y2	97.00%	6,484	458,713.23	921,437.37
Y3	96.30%	6,438	454,734.41	1,376,171.78
Y4	95.60%	6,391	450,787.41	1,826,959.19
Y5	94.90%	6,344	446,871.99	2,273,831.18
Y6	94.20%	6,297	442,987.89	2,716,819.08
Y7	93.50%	6,250	439,134.87	3,155,953.95
Y8	92.80%	6,204	435,312.67	3,591,266.62
Y9	92.10%	6,157	431,521.05	4,022,787.67
Y10	91.40%	6,110	427,759.76	4,450,547.43
Y11	90.70%	6,063	424,028.56	4,874,576.00
Y12	90.00%	6,016	420,327.22	5,294,903.21
Y13	89.30%	5,970	416,655.48	5,711,558.69
Y14	88.60%	5,923	413,013.11	6,124,571.81
Y15	87.90%	5,876	409,399.89	6,533,971.70
Y16	87.20%	5,829	405,815.57	6,939,787.27
Y17	86.50%	5,782	402,259.93	7,342,047.19
Y18	85.80%	5,736	398,732.73	7,740,779.92
Y19	85.10%	5,689	395,233.74	8,136,013.66
Y20	84.40%	5,642	391,762.75	8,527,776.42
Total		121,885		

Over the Useful Life of the Solar Pv System you will Save from CEB Bill Payments

Rs 8,527,776/=

Solar Vs No Solar - 5 Year CEB bill Comparison



ලංකා විදුලිබල මණ්ඩලය
இலங்கை மின்சார சபை
CEYLON ELECTRICITY BOARD



System Output & Savings Over the years

System Output & Savings Over the years				
Year	Solar Panel Efficiency	Yearly Output (kWh)	Annual CEB BILL PAYMENT Savings (Rs.)	Accumulated CEB BILL PAYMENT Savings (Rs.)
Y1	100.00%	6,685	462,724.14	462,724.14
Y2	97.00%	6,484	458,713.23	921,437.37
Y3	96.30%	6,438	454,734.41	1,376,171.78
Y4	95.60%	6,391	450,787.41	1,826,959.19
Y5	94.90%	6,344	446,871.99	2,273,831.18

**Congratulations !!! Over 5 Years you
Have saved from CEB BILL
PAYMENTS**

Rs 2,273,831/=

All Inclusive Solar PV System Total Price

Rs.1,449,000/=

1. **First Payment - 15%**
2. **Upon Clearance Document From CEB/LECO - 10%**
3. **Upon Materials Delivered to Site - 10%**
4. **Upon Site Completion - 50%**
5. **Balance Upon Commissioning**

Warranty

**Solar Panel - 25 Years performance warranty
10 Years product warranty**

10 Years manufacture warranty for the Inverter

Warranty will be effective only once the full payment is received by us as specified below

Please note that the warranty does not cover the Web Monitoring System which is provided free of charge. Customer must provide an ADSL connection near the inverter

DELIVERY, INSTALLATION & COMMISSIONING:

- Delivery of equipment will be within two weeks from the date of confirmation and installation will commence immediately thereafter.
- Commissioning of the system will require a maximum of 45 days from the date of confirmation subject to the payments made by you as mentioned above

Thank You

